

NORTH LAPLAND,  
SAARISELKÄ

## STUDENT TRIP TO NORTHERN LAPLAND (SAARISELKÄ)

Saariselkä is the Northernmost skiresorts in Finland. It locates 220 km North from Rovaniemi and the polar circle. The resort locates beside the beautiful U.K.K national park. Saariselkä resort offers variety of activities, good infracture (stores and restaurants nearby), comfortable cottage accommodation and great possibilities for seeing the Northern lights!



BUS TRIPS TO LAPLAND	PRICE
<b>Trips to Lapland, destination Saariselkä</b>	<b>With Cottage accommodation</b>
Departure from Helsinki, Riihimäki, Hämeenlinna	305,00 €
Departure from Tampere	295,00 €
Departure from Jyväskylä	275,00 €
Departure from Oulu or Rovaniemi	275,00 €



### Package price from 275 € includes:

- A round trip by bus or train to Rovaniemi & Saariselkä
- Accommodation 8-10 person cabins 4 nights (see picture)
- Visiting the Santa Claus village in Rovaniemi
- A cross-country skiing course +soup lunch
- A snow-shoe trek in the fell area
- Visiting traditional "smoke sauna" & Arctic swimming\*
- Visit of the reindeer farm + a reindeer safari
- VAT
  
- BBQ party in a Lappish hut on the last night!

### For extra cost:

- Catering, meals, breakfasts
- Extra activities as described in the default itinerary

*Mighty by nature*



**DAY 1 DEPARTURE**

- 20:00:00 Bus departure from Helsinki Railway station square (Mikonkatu 17)  
 22:30:00 Bus departure from Tampere Railway Station Square

**DAY 2 DEPARTURE**

- 01:30:00 Bus departure from Jyväskylä Railway station (Matkakeskus)  
 07:00:00 A coffee break in a gas station near KEMI, free time for breakfast 1 h.  
 10:00:00 Arrival in Rovaniemi, visiting the ARKTIKUM museum (guided tour 10 €)  
 12:30:00 Departure from ARKTIKUM to shopping  
 13:00:00 Shopping in Rovaniemi mall center (Citymarket, LIDL, Alko)  
 14:30:00 Departure from the shops to the Santa Claus Village (about 3 km).  
 17:00:00 Departure from the Santa Claus Village to Saariselkä (about 250 km driving)  
 Guides will collect the payments for the extra activities  
 21:00:00 **Arrival in Saariselkä**, briefing and lodging in cabins. Free time for saunas etc.

**DAY 3 TOUR OF THE ARCTIC OCEAN (40 €)**

- 07:30 Departure  
 11:00 Crossing the border to Norway. Near ocean coast we continue to village Bugoynes (30min break, possibility to swim in the ocean). A king-crab sandwich lunch inclusive in a local cafeteria.  
 16:00 Back to Finland, last break in Näättäjä village (shopping).  
 20:00 Arrival back to Saariselkä. Free time.

**DAY 4 OPTIONAL ACTIVITIES – HUSKY AND SNOWMOBILE SAFARIS**

- 09:30 GROUP I, Snowmobiles & Huskies (bus departure from cabin # 1) max. 20 pax/husky, 10 pax/snowm. group  
 11:30 GROUP II, Snowmobiles & Huskies (bus departure from cabin #1) max. 20 pax/husky, 10 pax/snowm. group  
 16:30 Meeting at the cabin # 1, departure to ICE KARTING (17.00-18.00)

**PRICES FOR THE ACTIVITIES**

- A HUSKY SAFARI 1,5 hrs +snack (65 €/per person)  
 B SNOWMOBILE SAFARI 1 hrs (60 €/per person)  
 C DOWNHILL SKIING 3 hrs (2 hour ticket+gear 30 €, 3 hour 40 €, 5 hour 50 €) Paid to ski-resort. In order to get this discounted price, please say "Aikamatkat" when paying for the ski pass and the gear.  
**ATTENTION! SLOPES ARE OPEN DAILY 10.00-17.00!!!**  
 D ICE KARTING 10 minutes (35 €/per person)  
 Activity groups decided according to the sign-up list. You may also rent cross-country skis, snow shoes etc.  
 19:00 You can relax the rest of the evening in the Saariselkä SPA, entrance 12 €/per person.  
 SPA is open daily 12.00-20.30. Entrance for students 12 €/per person.

**DAY 5 SKIING, SNOW SHOES AND THE SMOKE SAUNA**

- 09:00 GROUP 1 (Cottages 1-4) Cross-country skiing course (meeting point in front of the cottage)  
 GROUP 2 (Cottages 5-8) Snow-shoeing trek (meeting point in front of the cottage # 1)  
 The program includes a two our trek by skiing and snow-shoeing to Luttokuru, where there is a soup lunch. After Luttokuru teams are changed (skiing to snow shoes and vice versa).  
 13:00:00 End of the program. (transportation to the smoke sauna)  
 13:00:00 End of the program. (transportation to the smoke sauna)  
 17:00:00 Transportation from the smoke sauna back to the cottages  
 20:00 In the evening a special BBQ-party in a Lappish style hut. There is a big fireplace, where you can barbecue your own sausages etc. Walking distance from the cabins about 1,5 km. Meeting time at the bus place at 20.00  
 00:00 Hint! In the evening the best place to see Northern lights is the local mountain, from the top of it you can see 360 degree panorama all over. You can easily reach the mountain by foot from your cottage

**DAY 6 REINDEER FARM AND DEPARTURE HOME**

- 12:00 Check-out. You must clean the cabins and wash the dishes in your cabin!  
 12:15 Bus departure to the reindeer farm.  
 12:30 Reindeer farm, a short reindeer safari + a coffee break in a Lappish hut  
 15:00 Departure from the Reindeerfarm  
 18:00 Passing Rovaniemi  
 21:00 Passing Oulu

**DAY 7 ARRIVAL HOME**

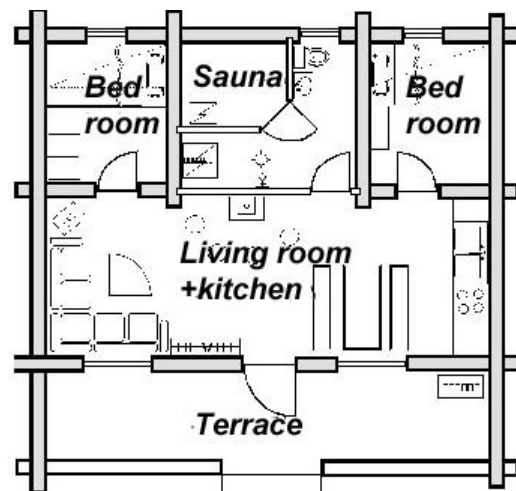
Arrival in Jyväskylä at around 5.00, Tampere at 07.00, Helsinki at 10.00.  
 Timetravels reserve right to changes. Arrival times are estimations.

## ACCOMMODATION

Log cabins for 6-10 persons, 50 m<sup>2</sup>. Recommended max for 8-9 people/cabin.

Two bed rooms, living room with fire place, sauna, shower, bathroom, tv, radio, cd-player, kitchenette, coffee machine, microwave oven, dishwasher. Wood for the fireplace is inclusive.

### Pictures:



### PRACTICAL INFORMATION ABOUT THE COTTAGE

**DISH WASHER** → Please see, that the tap is switched on, otherwise the dishwasher will not start the program

**SAUNA** → In order to heat the sauna, please notice that the white numbers start sauna heating immediately. You can choose how long the sauna is on (1-4 hrs). You can also program the sauna to be heated by using numbers the dark numbers (1- 10 hrs). The other switch must be set to maximum in order to get the sauna hot!

**HOT WATER BOILER** → There is a hot water boiler, which can heat up 200 liter water at once. Do not take too long showers using all the water at once, or else the rest will have to wait about 1 h for hot water.

**LOCKED YOURSELF OUT?** → You can get a new key from the PANIMO reception, which is open until 2 AM. Panimo locates opposite to the Holiday Club SPA.

**NORTHERN LIGHT GAZING** → The Northern lights have been visible many nights just above the cottages. However, if you want to take a walk to the hill, walk left (up) from the bus parking place and walk as long as there will be a pedestrian path traffic sign. Eventually you will arrive to the top of the hill.

# SAARISELKÄ MAP

Restaurant



**KAUNISPÄÄ**

Slopes  
Ski resort  
10.00-17.00

The Europe's  
longest sledding hill (1,5 km)  
Get free toboggans  
below the hill  
or from the SPA

**LASKETTELU-  
KESKUS** 13

BBQ  
party site



**KIRKKO**

**GIELAS** 22



**RIEKONLINNA** 12

**TUNTURI-  
HOTELLI**



**LATUJEN  
LÄHTÖ**



Starting place for huskies  
and snowmobiles (5 km from cabins)

**3 HUSKYBAARI**  
**15 HUSKYFARMI**

**UKK  
NATIONAL PARK**

This is where  
we stay



This way  
to the top of  
the mountain



To slopes walk straight 1 km



TO SPA  
walk 500 m



Grocery  
stores  
**SIWA &  
K-market**  
(09.00-21.00)



**SIULA**

**TEERENPESÄ**

**KUUKKELI**



**SPA  
(12.00-20.30)  
KYLPLYÄ** 9



**PANIMO  
Cabin reception** 8



**KIEPPI**

**ACTION  
PARK  
POROPIHA**



**PELASTUS-  
KESKUS**



**LAANIHovi**

**SAVOTTA KAHVILA**

To Rovaniemi 260 km  
Rovaniemelle 260 km

APOTEK	4
ART GALLERY	2,5
CAFE	1, 2, 4, 14
CATERING SERVICE	20
CENTRAL BOOKING OFFICE	4
COTTAGE SERVICE	6
DESIGN	2,12,22
DOCTOR, NURSE	9
FASHION	2
FOREST BAR	3
GIFTS	2, 8, 14, 12,22,4
HANDICRAFTS	2
HOTEL	2, 9, 10, 11, 12,22
INN	8
JEWELRY	22
LOCAL NEWSPAPER	18
NATIONAL PARK INFO	2
OUTDOOR EQUIPMENT	19
PHYSICAL TREATMENT	12
POST	4
PUB	8
RESTAURANT	4, 7, 9, 11, 12, 14,16,17, 22
RENTAL	18, 22
SAFARIS	12, 15, 18, 22
SERVICE STATION	1
SKI CENTER	13
RENTAL	18
SOUVENIRS	2, 4, 8, 14
SPA	9
SUPERMARKET	4
TAXI	4
TOURIST INFORMATION	2

## GENERAL INFORMATION

### SAARISELKÄ SKIRESORT

The Saariselkä village locates beside the Saariselkä fell region and Urho Kekkonen national park. It's one of the most popular and exotic skiresorts of Finland . There are six slopes available for down hill skiing, but there are several other activities to be chosen from, such as **husky and snowmobile safaris**. And the landscapes, they are simply breathtaking! <http://www.saariselka.fi>



### THE BEST PLACE TO SEE THE NORTHERN LIGHTS

Saariselkä locates in the polar zone, where Aurora Borealis is most active in Scandinavia. According to the statistics, it's visible 200 days during the active season, from September to April. This means at least a 80 % possibility for their appearance. Only thing which can prevent you from seeing the Northern lights is cloudy weather. However, during the week a possibility of a cloudless night is pretty good. If you want to see a forecast for polar lights, check [The Space Weather Prediction Center websites](#).



### TOUR OF THE ARCTIC OCEAN (40 €)

During this guided day bus tour you will learn more about the arctic nature, three sámi cultures and Finnish kven culture located in the Bygoenes village on the shore of the Arctic Ocean. In addition, you will see breathtaking landscapes, have a chance to walk on the shore of the Arctic ocean and even swim there. You have also a possibility to taste a fresh king crab sand which in local restaurant. The tour is about 550 km in total and takes about 8 hrs.



### THE SPORTS PROGRAM

Professional wilderness guides will teach you the basics of cross country skiing, and orienteering on snow shoes on the ravishing beautiful fell area. At the end you will visit the traditional smoke sauna in dip in the ice cold mountain river. The program is of great fun and included in the trip package.



### THE REINDEER FARM

There's a reindeer farm hosted by saami people on the other side of the mountain. During the excursion you will learn more about reindeers and also feed them. Afterwards you can have a ride on a reindeer sleigh. Finally, you will have a pleasant coffee break in a Lappish hut.



### THE SANTA CLAUS VILLAGE

Have you ever dreamt of meeting the REAL Santa, who actually lives in Rovaniemi? It's possible in Santa's village or "Joulupukin pajakylä", right on the crossing point of the arctic circle. Apart from the Santa's office, it houses all kinds of different attractions and shops.



## THE KEMI SNOW CASTLE

The world famous Kemi Snow Castle is no doubt the biggest Snow castle in the world. It is built every year starting in January, every time with different theme, architecture and artists. In the castle you will find a hotel, chapel and a restaurant, all decorated by beautiful ice sculptures.



## THE SAARISELKÄ SKI RESORT

The Saariselkä village locates about one hour bus trip away from Vasatokka beside the Saariselkä fell region and Urho Kekkonen national park. It's one of the most popular and exotic skiresorts of Finland . There are six slopes available for down hill skiing, but there are several other activities to be chosen from, such as husky and snowmobile safaris. Landscapes are simply breathtaking!



## THE SNOWMOBILE SAFARI 1 h (60 €)

You do not need a driver's licence for this, but previous driving experience is recommended. The price is given for a shared snowmobile (2 persons), each can drive about 30 minutes. The route takes you to the top of the fell through beautiful landscapes. Please mind that the self risk (deductible\*) is 600 € if the snowmobile is damaged during the excursion. (\*The part of the damage, which is not compensated by the insurance company and has to be paid by the client).



## THE HUSKY SAFARI 1,5 hrs (65 €)

Siberian huskies and cheerful and strong dogs those really like to pull the sledge! After a short instruction lesson the huskies will take you for a tour through the snowy landscapes. The sledge is shared for two people, each can drive about 30 min. After the safari you will enjoy pancakes and tea in the base camp.



## ICE KARTING (35 €)

Ice karting is fun and suits everyone. You can either drive at your own pace or take part in a playful contest. The high-performance cars with studded tyres ensure that even the most daring of drivers can test their limits and see how hard the snowbanks are.



## THE SMOKE SAUNA (Finnish: SAVUSAUNA)

The sauna culture has existed in Finland for ages. The smoke sauna is an ancestral type of sauna, which has experienced a great revival in recent years and often considered to be superior to all saunas. The principle of the smoke sauna is complicated heating for several hours. When the sauna is hot enough, the fire is allowed to die and the smoke is ventilated out (original smoke saunas do not have a chimney). As result, the steam of the sauna is very soft and has a pleasant smoke odor. A dip to the ice cold river is a good way to experience resurrection between the sauna sessions!



## **FREQUENTLY ASKED QUESTIONS:**

### **Q: Are there any meals included?**

*A: In order to get the the trip price as low as possible, we stay in cottages with self-catering. Lunches or breakfasts are not inclusive except from one lunch during the sports day. There are good kitchen facilities in every cabin and groceries are not more expensive than in Southern Finland. Good way to save in costs is to buy everything together with the people you are a sharing your cabin with.*

### **Q: We are a group of 8 people, can we stay in the same cabin? Should we book the trip together?**

*A: All rooming wishes will be taken into consideration during the bus trip. You are given the room list in the bus, where you can put your name. If you want to do the activities together, you must be in the same cabin and bus.*

### **Q: Would it not be possible to do all the activities together? Why do we have to split up?**

*A: In order to give you best guidance and smooth service, you need to be divided in groups maximum 25 people. Otherwise the programs will mean more waiting, which is quite inconvenient if there is -25 C outside! Besides there is a limited number of skis, places in the sauna, dogs, snowmobiles – the local entrepreneurs prefer to synchronize groups instead of getting more costs for extra gear etc.*

### **Q: What should I bring with me?**

*A: At least the following:*

- *Warm clothes*
- *Bedlinen or sleeping bag*
- *Swimming suite (unless you want to do it the Finnish way)*
- *Anything else you may need during the trip, money, medicine etc.*
- *Student card for discounts*
- *Cash or credit card for program payments*

### **Q: What if I want to cancel my trip?**

*A: With cancellations we apply the following rules:*

- *More than 21 days prior to the departure – no charges*
- *Less than 21 days but more than 14 days prior to the departure – 50 € charged*
- *Less than 14 days but more than 48 hours prior to the departure – 50 % of the tour price charged*
- *Less than 48 hours prior to the departure 100 % of the tour price charged*

*In case of sickness, proved by a doctor's certificate we can allow a free change of trip dates or more refund.*

Timetravels reserve right to changes in the program and prices. Itinerary is a preliminary one and final itinerary is sent to passengers a few days prior to the departure, as some activities are subject to weather conditions.